

THE OXEN & LION

Once there lived two oxen in a forest. They were fast friends. They always helped each other. One day while they were grazing grass, a lion appeared from somewhere. Both the oxen remained clam. They were not worried at all. They countered the lion in such a way as he ran off. A fox was nearby going to either of them and whispered cunningly. The fox's trick put a disuniting effect. The oxen that were till a few days ago sacrificing friends of each other. The lion again attacks one of them. The other oxen that nearby did not come to his help. The lion killed the ox and went off. After a few days, it attacks the other ox too. Now he was alone, therefore he could not save himself. He was also killed by the lion

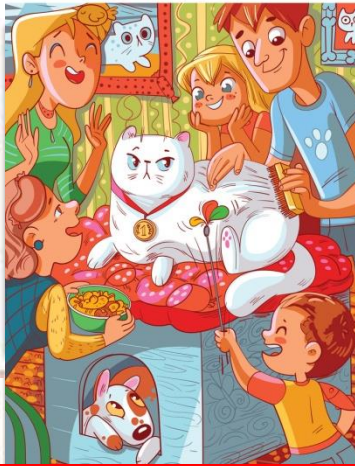
MORAL : *United we stand, divided we fall*



Find the Differences



FIND 10 HIDDEN OBJECTS IN THE PICTURE



$$\begin{aligned}
 & \text{Bus} + \text{Bus} + \text{Bus} = 36 \\
 & \text{Bird} + \text{Heart} + \text{Bird} = 6 \\
 & \text{Bus} + \text{Bus} + \text{Bird} = 24 \\
 & \text{Bus} = ? \quad \text{Bird} = ? \quad \text{Heart} = ?
 \end{aligned}$$

Similarities in the pictures....?

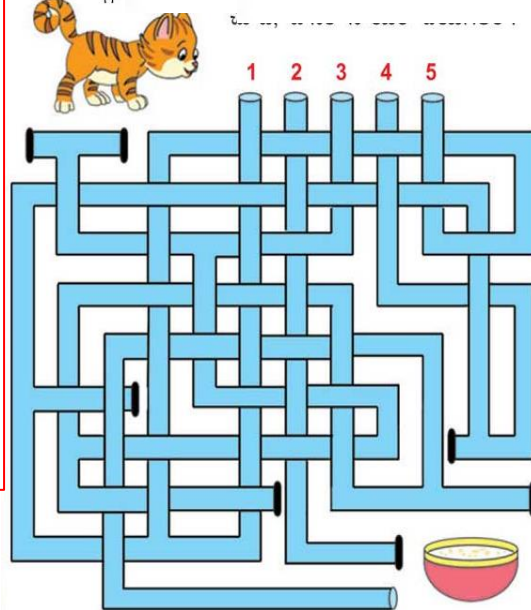


MATCH THE FOLLOWING

- | | |
|----------------|-----------|
| KARNATAKA | ORIYA |
| MAHARASHTRA | TELUGU |
| WEST BENGAL | MARATHI |
| ODISHA | HINDI |
| TELANGANA | MALAYALAM |
| KERALA | BENGALI |
| UTTAR PRADESH | KANNADA |
| ANDHRA PRADESH | |

$$\begin{aligned}
 & \text{Bus} + \text{Bus} + \text{Bus} = 30 \\
 & \text{Goblin} + \text{Bus} + \text{Goblin} = 22 \\
 & \text{Dog} + \text{Dog} + \text{Goblin} = 16 \\
 & \text{Bus} \times \text{Dog} + \text{Goblin} = ?
 \end{aligned}$$

Find out the Route.....



Find opposite plane of 6?

